

## PPV3



### PUSH PULL

VALVOLA  
POPPE  
VENTIL  
CLAPET



### Caratteristiche tecniche

I

- Norma: ISO 7241 A (DN10→DN25)
- Ghiera: doppia azione
- Occlusione: valvola
- Aggancio: sfere radiali
- Materiale: acciaio
- Finitura: Zn-Fe (Cr III)
- Filettature: BSP - NPT - SAE - METRICHE
- Guarnizioni standard: NBR
- Temperatura d'esercizio: -25 °C +100 °C
- Guarnizioni opzionali: FKM, EPDM o altro
- Pressioni di esercizio: 225-350 bar
- Connessione in pressione: non consentita

### Technical data

E

- Standard: ISO 7241 A (DN10→DN25)
- Sleeve: double acting
- Occlusion: poppet
- Locking: radial balls
- Material: steel
- Finishing: Zn-Fe (Cr III)
- Threads: BSP - NPT - SAE - METRICS
- Standard seals: NBR
- Working temperature: -25 °C +100 °C
- Optional seals: FKM, EPDM or more
- Working pressure: 225-350 bar
- Connection under pressure: not allowed

### Technische Merkmale

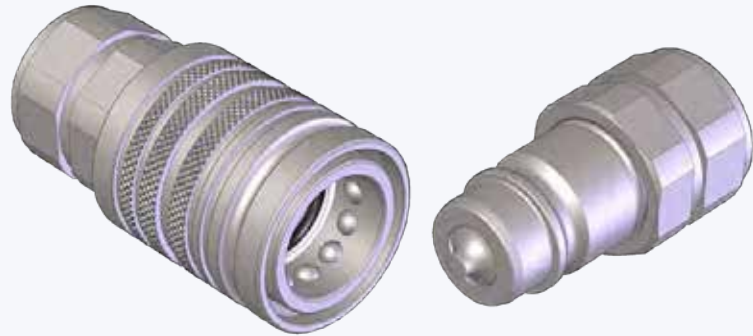
D

- Norm: ISO 7241 A (DN10→DN25)
- Hülse: doppelwirkend
- Verschluss: ventil
- Kupplung: Radial Kugeln
- Werkstoff: Stahl
- Ausführung: Zn-Fe (Cr III)
- Gewinde: BSP - NPT - SAE - METRISCHE
- Standard-Dichtungen: NBR
- Betriebstemperatur: -25 °C +100 °C
- Dichtungen nach Wahl: FKM, EPDM, usw.
- Betriebsdruck: 225-350 bar
- Kuppeln unter Druck: nicht möglich

### Caracteristiques techniques

F

- Norme: ISO 7241 A (DN10→DN25)
- Douille: double action
- Obturation: clapet
- Accrochage: billes radiales
- Matériel: acier
- Traitement: Zn-Fe (Cr III)
- Taraudage: BSP - NPT - SAE - METRIQUES
- Joints standard: NBR
- Température de service: -25 °C +100 °C
- Joints facultatifs: FKM, EPDM, ect.
- Pression de service: 225-350 bar
- Connexion sous pression: pas possible



| Nominal size |    |      |      | Max working pressure<br>MPa | Rated flow |       | Min burst pressure |               |                | Fluid spillage<br>cc |
|--------------|----|------|------|-----------------------------|------------|-------|--------------------|---------------|----------------|----------------------|
| DNP          | BG | ISO  | mm   |                             | I/min      | I/min | Male<br>MPa        | Female<br>MPa | Coupled<br>MPa |                      |
| 06           | 1  | 6.3  | 5    | 35                          | 12         | 17    | 100                | 240           | 170            | 0.5                  |
| 10           | 2  | 10   | 8.5  | 30                          | 23         | 46    | 130                | 150           | 130            | 1.9                  |
| 13           | 3  | 12.5 | 10.5 | 25                          | 45         | 90    | 95                 | 160           | 110            | 2.7                  |
| 20           | 4  | 20   | 15.7 | 25                          | 106        | 190   | 120                | 140           | 110            | 9.3                  |
| 25           | 5  | 25   | 17.3 | 22.5                        | 189        | 280   | 90                 | 110           | 100            | 16                   |

1 MPa = 145.04 psi • 1 l = 0.264 gal

